



**marmox**<sup>®</sup>

**MARMOX SLICED STONES VENEER SHEETS**  
INSTALLATION MANUAL

# table *of* contents

01 .....	Introduction
02 .....	Advantages
03 .....	How to Install
05 .....	Colors and Sizes Available

**Marmox**

**Innovative  
Construction  
&  
Insulation  
Solutions**



## Sliced Stone Veneer Sheets

Marmox Sliced stone Veneers is a lightweight and visually striking solution for various applications, both indoors and outdoors. Crafted from Indian sedimentary rock, these veneers undergo advanced technology, resulting in a practical and cost-effective alternative to traditional, thicker stone tiles. With 19 unique styles, each sheet is a one-of-a-kind masterpiece.

Treated with a clear, waterproof, and stain-resistant solution, these veneers offer easy maintenance. Available in three sizes, they showcase the stunning color variations of Indian sandstone while remaining remarkably lightweight.

Their flexibility allows for seamless integration into diverse design schemes, bringing a touch of nature's elegance to both traditional and contemporary settings.

Elevate your spaces with the beauty and practicality of these real stone veneers.

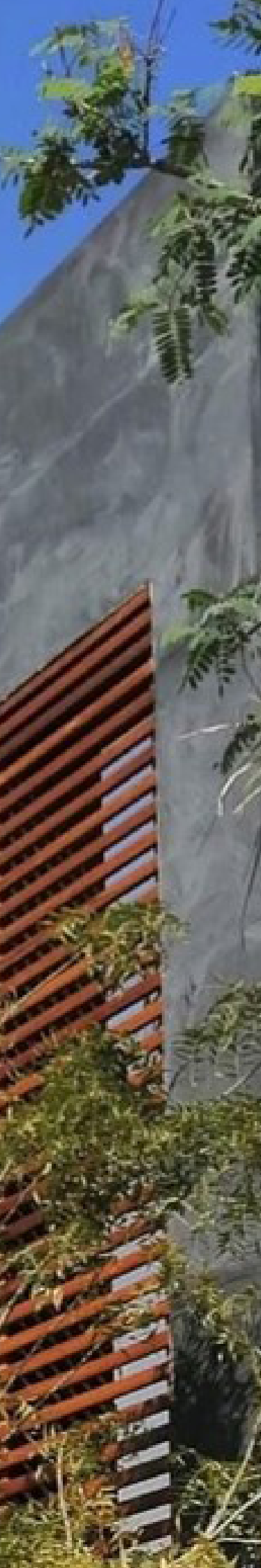


### SLICED STONE

*Lightweight and visually striking*

## Specification

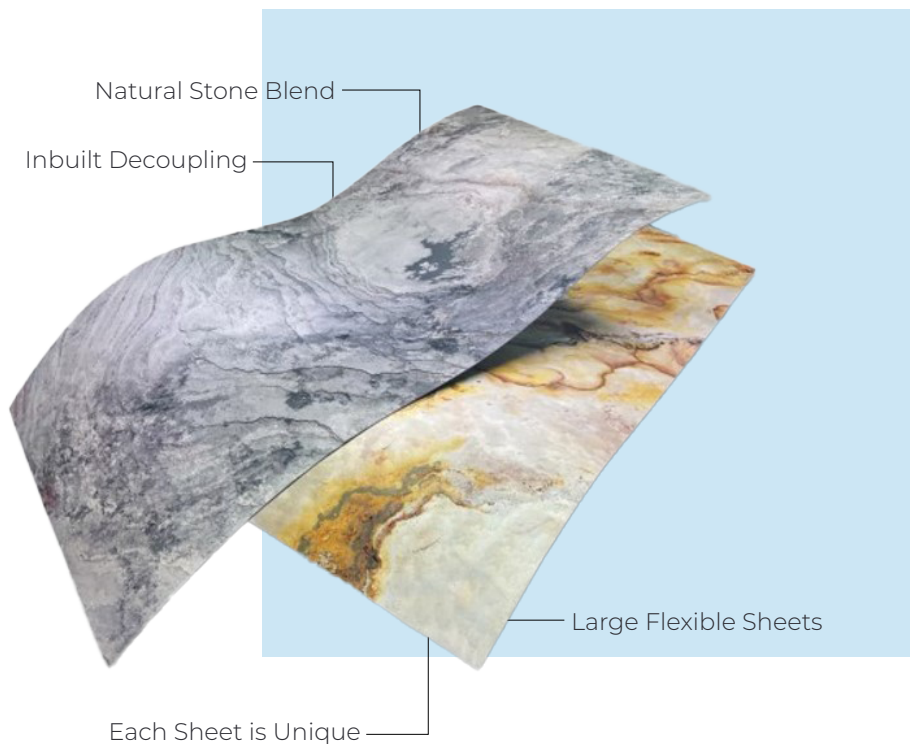
- **Quick and easy installation:** Our user-friendly installation specifications guarantee a seamless and efficient process, redefining simplicity with our sliced stone veneer sheets. Realize your design visions with ease.
- **Versatility:** Adaptable stone cladding and easy cutting offers endless possibilities. Its lightness and flexibility make it suitable for a variety of indoor and outdoor endeavors.
- **Lightweight:** The lightweight nature of these Slicedstone panels enhances their versatility, particularly in environments where heavier alternatives are impractical.
- **Water Endurance:** Crafted from 100% natural stone, these panels exhibit innate resistance to water. This attribute extends their usage from outdoor settings to areas with elevated moisture levels.
- **Effortless Upkeep:** Simple cleaning with everyday products ensures enduring elegance.



## Technical Specs

Thickness	4 (±1.5) mm thick
Weight	2.5 – 3 kg/m <sup>2</sup>
Moisture	Treated to be stable in water and moisture
Storage	Horizontally on straight surface
Sheets Size	30 x 60 cm 105 x 210 cm

The new product's slimline form - at just 4 (±1.5) mm thick and supplied on a specially formulated decoupling layer - means they can still be applied to curved surfaces both indoors and out.



## Advantages

- Natural Stone
- Ultra Lightweight
- Each Sheet is Unique
- 100% Waterproof
- Inbuilt Decoupling
- Large Sheet Sizes
- Many Flavour



# Marmox Sliced Stones Veneer Sheets

## *Installation*

---

Prior to installing your Slicedstone veneers, lay them out making sure of an even distribution of the texture and varying colouration of your sheets.

# 1

### **CUTTING SLICEDSTONE VENEER SHEETS**

Use plunge saws, in combination with a diamond-edged blade, or opt for a versatile multi-purpose tool for detailing. Slicedstone sheets, ranging in thickness from 3mm to 5mm, are easily and precisely cut using these tools. It's important to note that due to the unique nature of Slicedstone, traditional tile cutters or scribing knives are not suitable for the cutting process.

# 2

### **TRIMS**

When choosing a profile take into consideration the thickness of the Sliced Stone Sheets and the thickness of the adhesive you will be applying.

Add these measurements together to end up with the overall height of the profile that you will require. When installing any profile always refer to the manufacturers preferred installation method.



### **SURFACE PREPARATION**

# 3

Verify the appropriateness of the surface by ensuring it is devoid of substances that may impact the intended installation's performance. Treat any porous, unstable, or crumbly surface with a primer.

Clean impervious surfaces and securely attach existing coverings of any surface impurities. Then, lightly roughen the surfaces to create an optimal foundation for adhesive bonding.

If you need guidance on selecting the right primer, reach out to the technical department of your preferred adhesive manufacturer.

Sliced Stone can also be applied on steel and wood surfaces by using the appropriate adhesive to each surface.



# COLORS

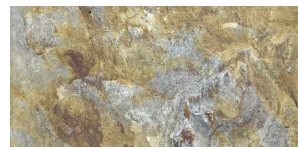
Indulge in the uniqueness of each sheet, Step into a vibrant world of hues as we present an array of captivating colors and textures that tailor the perfect look and feel for your exterior and interior design. Elevate your style and stand out in the world of construction.



901



902



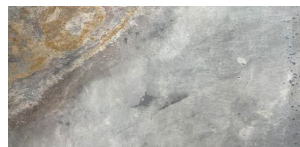
903



904



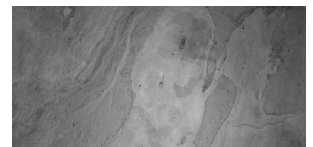
905



906



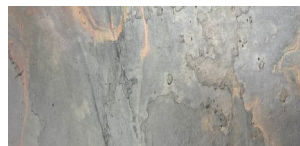
907



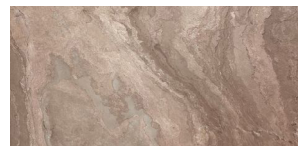
908



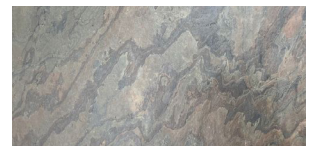
909



910



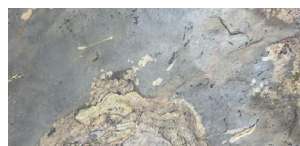
911



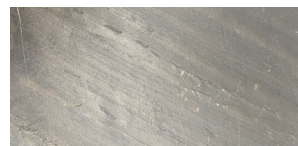
912



913



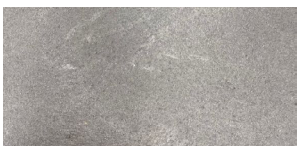
914



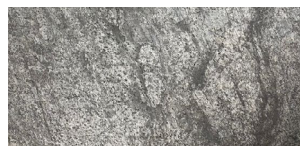
915



920



925




926



927

**Please note:** These colours are a good indication but may not be an exact match. Because Slicedstone is made from real stone, by nature, styles and colours can vary in batches and from sheet to sheet.

 1300 783 693

 [info@marmox.com.au](mailto:info@marmox.com.au)

 [www.marmox.com.au](http://www.marmox.com.au)

 PO BOX 2207 Taren Point  
Business Centre Taren Point  
NSW 2229 Australia



*IT'S WHAT 'S UNDERNEATH THAT COUNTS*